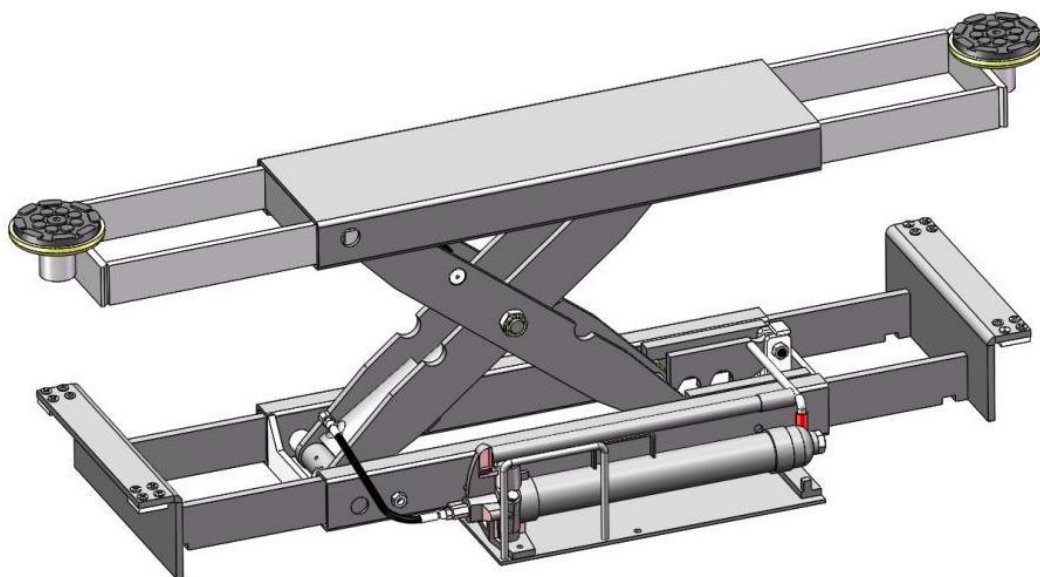




# Installation And Service Manual

Original



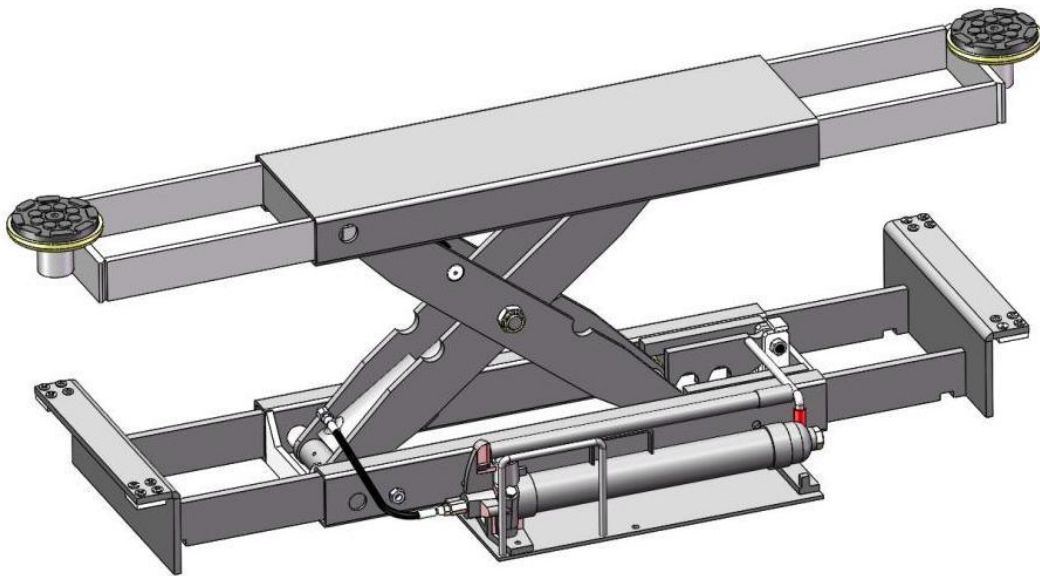
**Jack**  
**Model: J5H**

# CONTENTS

Product Features and Specifications .....	1
Storage and Installation.....	3
Installation procedure.....	3
Operation Instruction.....	5
Maintenance schedule.....	7
Trouble Shooting .....	8
EXPLODED VIEW .....	9
Car lift safety tips .....	12
Lift Disposal .....	12

## **I. FEATURE AND SPECIFICATIONS**

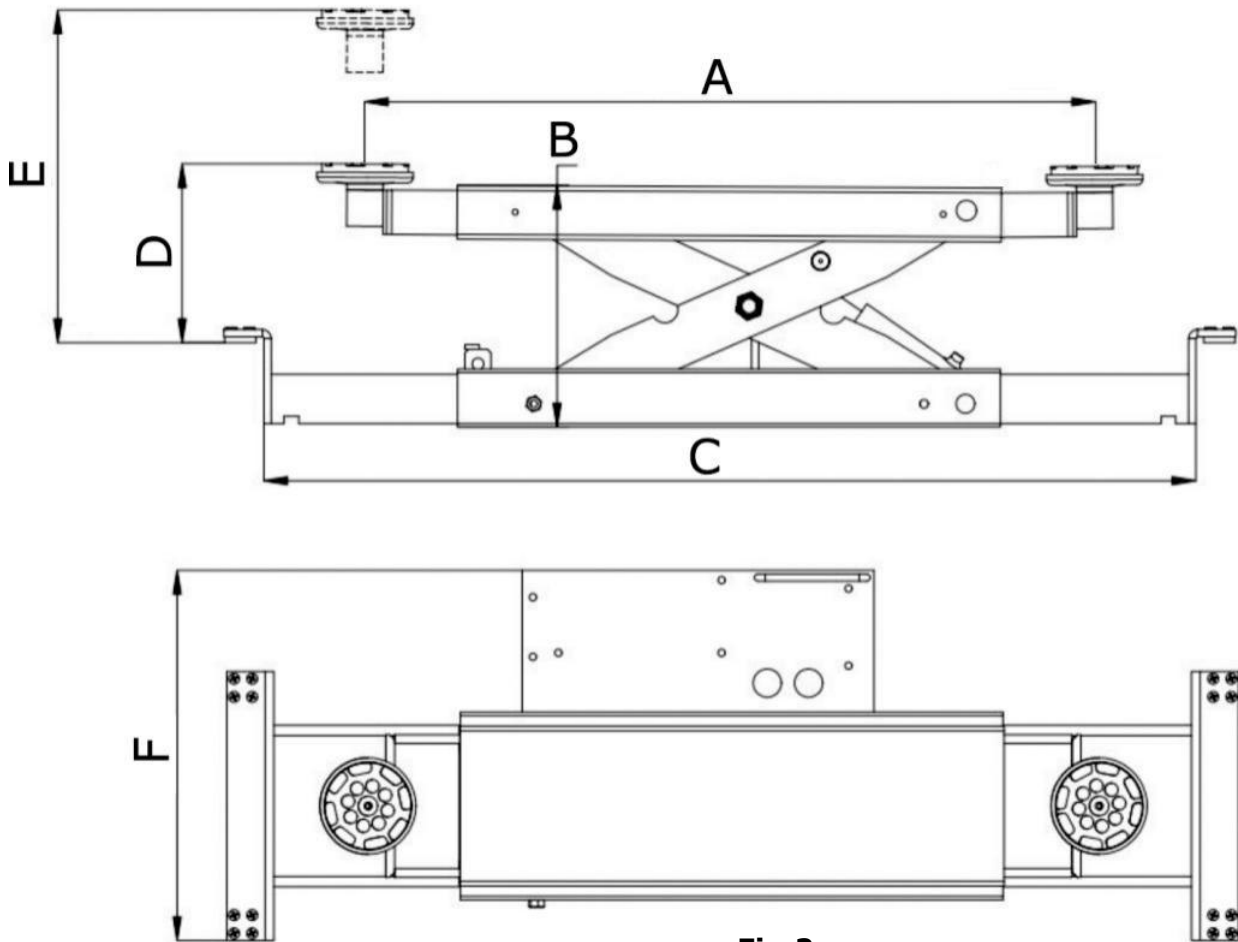
- Safety mechanism lock
- Easy operation: J5H equipped with hand pump
- This Jack is ideal for use on the Four-post Parking lift as well as can be used separately
- Adjustable 1.5", 2.5" extension adapters & Rubber Pads assy



**J5H**

**Fig.1**

## Measurement Image



**Fig.2**

## Specifications

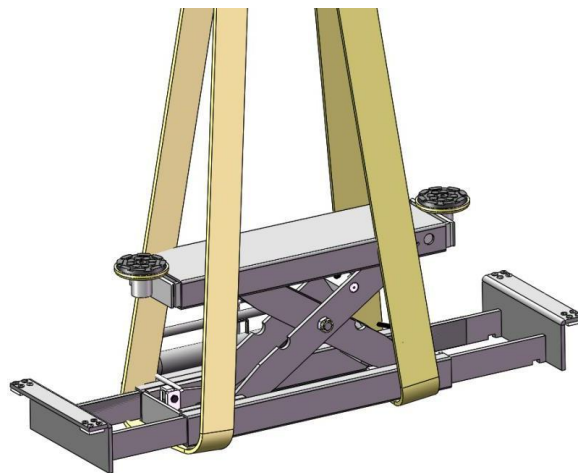
Model	Lifting capacity	Lifting time	A	B	C	D	E		F	Pump
			Arm Pads Reach	Min. Height	Support Base Width	Min. rubber pad Height	Max. Lifting Height (Without adapters)	Max. Lifting Height (With adapters)	Overall Width	
J5H	2,200kg (5,000lbs)	50s	840-1350 mm (33"-53 1/8")	210mm (8 1/4")	780-1270 mm (30 3/4"-50")	120mm (4 3/4")	360mm (14 1/4")	462mm (18 1/8")	510mm (20")	Manual Pump

## II.Storage and Installation

### 1. Requirements.

- 1.1. The equipment shall be stored in a dry, mildew-free, non-flammable environment;
- 1.2. The equipment is only approved for installation and be used indoor,do not installation outdoor.
- 1.3. In order to avoid equipment damaged, it is the responsibility of operator to read and follow instructions to take in safety precautions before installation.
- 1.4. Do not install the equipment outdoor if that area is few protective measures.
- 1.5. Carefully inspect the Jack and certain all parts are in place and running correctly after completed installation.
- 1.6. Ensure that only authorized personnel operate. All installation and maintenance must be performed by an authorized and qualified Technicians. Do not make any modifications to the equipment.

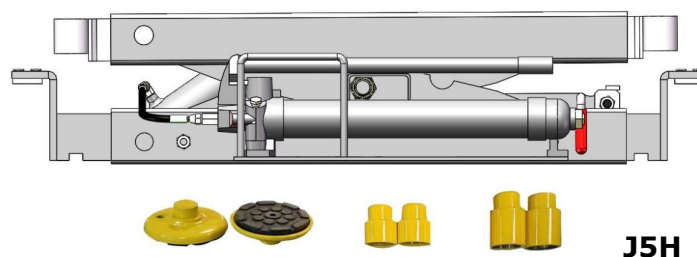
### 2. Jack shall be removed and transportation by forklift or lifting equipment..



**Fig.3**

## III.Installation procedure

1. Check the parts before assembly, confirm all the parts are completed.



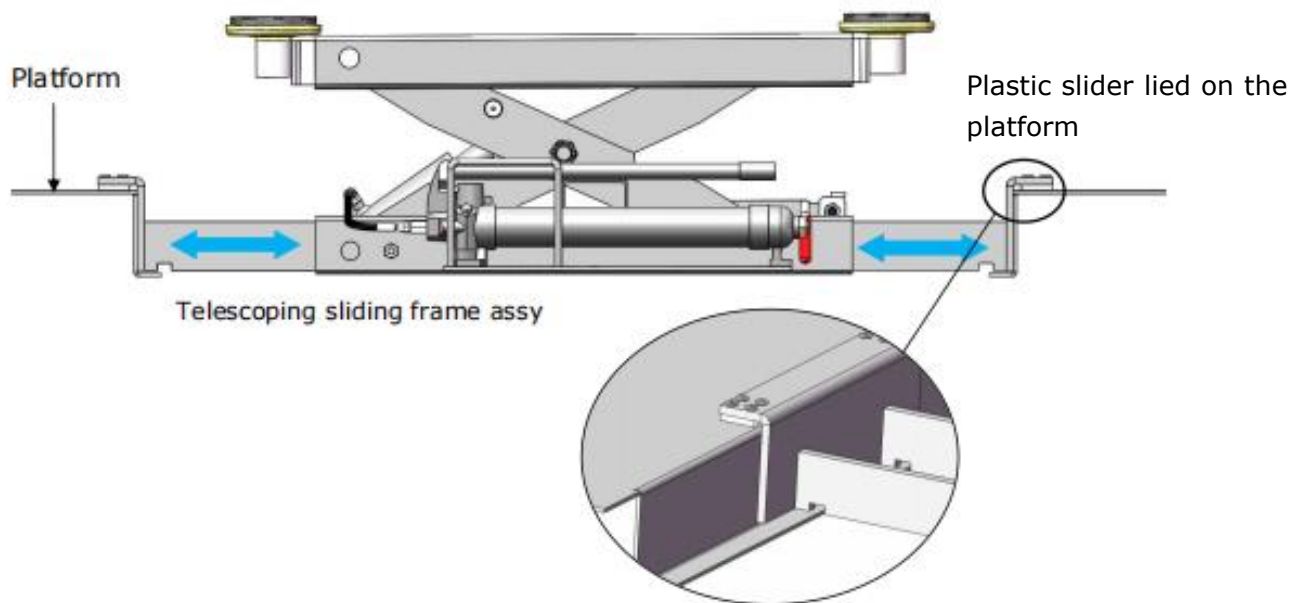
**Fig.4**

## 2. Equipment installation

2.1 Make sure the 4-post lift is fully lowered and the safety lock is locked.

2.2 Using the Hoist crane, forklift or other lifting equipment to lift the Jack above and between the Lift's two platforms.

2.3 According to the distance between the two platforms to adjust the Extendable Bases, make the plastic slider lied on the platforms.

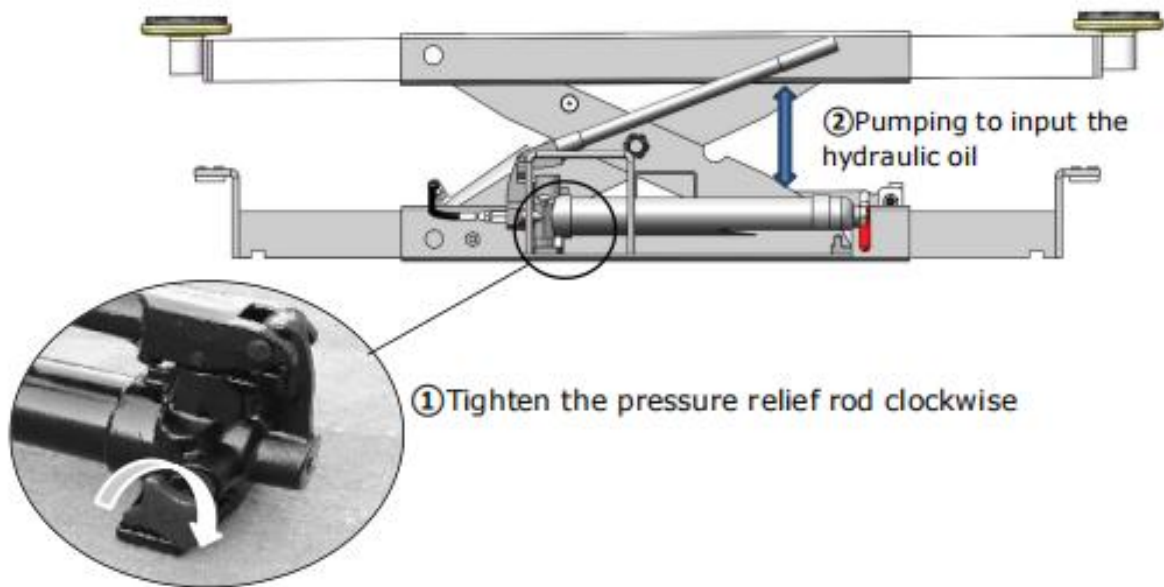


**Fig.5**

### 3. Operation instruction

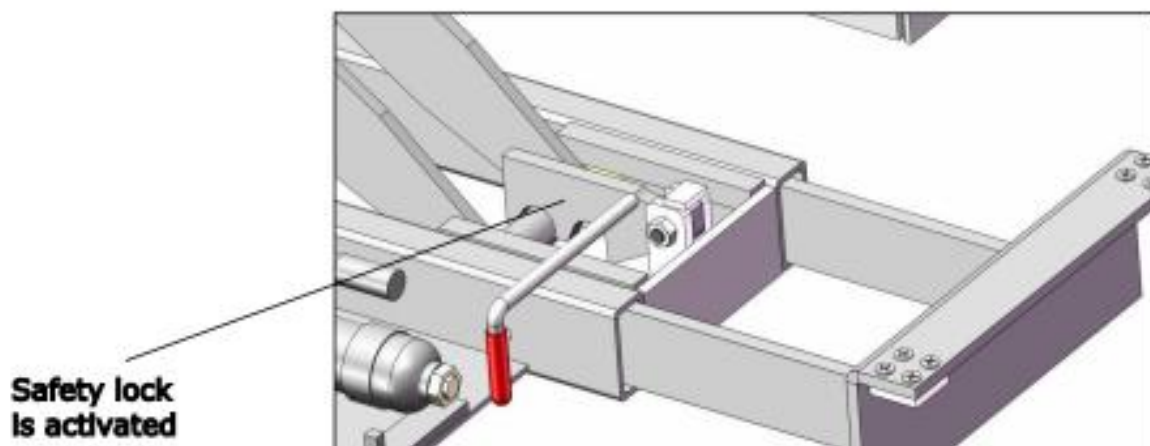
#### 3.1 Lifting operation of J5H

A. Completed install the Jack on right position. Tighten the pressure relief rod clockwise and then start pumping to raise the Jack with the hand pump.



**Fig.6**

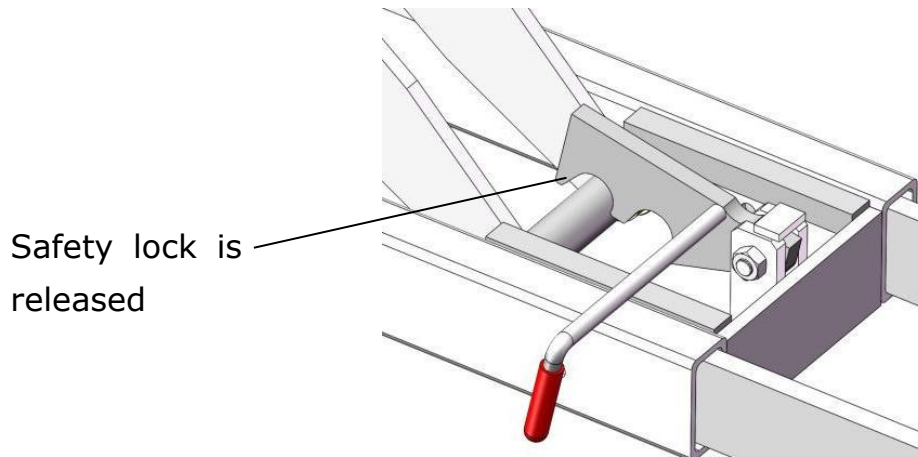
B. After the Jack raises to a suitable work height, make sure the safety lock is locked before processing work.



**Fig.7**

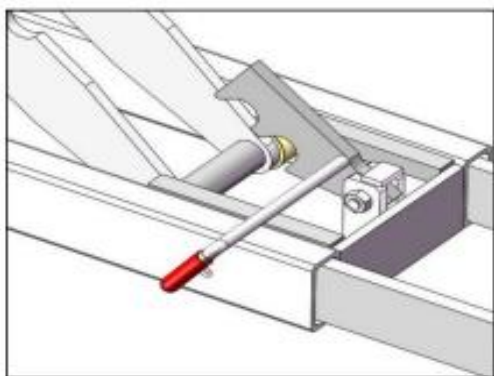
### 3.2 Descending operation of J5H

A. Pumping the hand pump to raise the Jack for few seconds till the safety lock device is released.



**Fig.8**

B. Turn up the safety lock handle with one hand while other hand rotate the pressure relief rod counterclockwise, and the Jack will lower. To re-tighten the pressure relief rod after the Jack is fully lowered.



① Turn up the safety lock at first

**Fig.9**



② Rotate the pressure relief rod counterclockwise

**Fig.10**



#### **IV. MAINTENANCE SCHEDULE**

Keep the Jack clean; wipe up any oil spills. Do not let dirt get into the hydraulic system.

1. Daily:

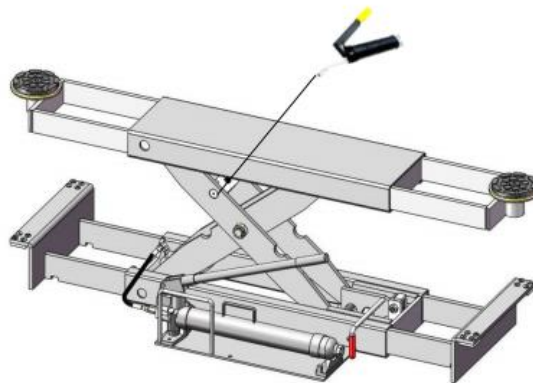
- Make a visual inspection of all moving parts and check for damage or excessive wear. Replace any damaged or worn parts before setting the Jack back into service.
- Ensure that safety locks are in good working status. Do not use your Jack if the safety lock are damaged, over-worn, or out of place.
- Inspect rubber pads for damage or excessive wear.

2. Weekly:

- Lubricate all rollers and connecting pin with oil or WD-40.
- Check all oil hose connections, bolts, and pins to ensure no abnormalities.
- Check the cylinder connection bolt (tighten the bolt if necessary).

3. Monthly:

- Check the hydraulic oil of the pneumatic hydraulic pump, and refill it if required
- Add grease to running friction parts for lubrication and maintenance.



**Fig.11**

4. To maintenance Hydraulic Oil

A. Replace the hydraulic oil every 350 hours. The oil change period should be appropriately shortened, if used in a dirty environment;

B. Remove the tank cover when changing oil, to throw out the deteriorated and dirty hydraulic oil, and then put the pump body and the tank into a clean container with clean diesel or kerosene for washing, and finally dry it with compressed air. Reassemble the tank with good quality, cleanly 32# hydraulic oil.

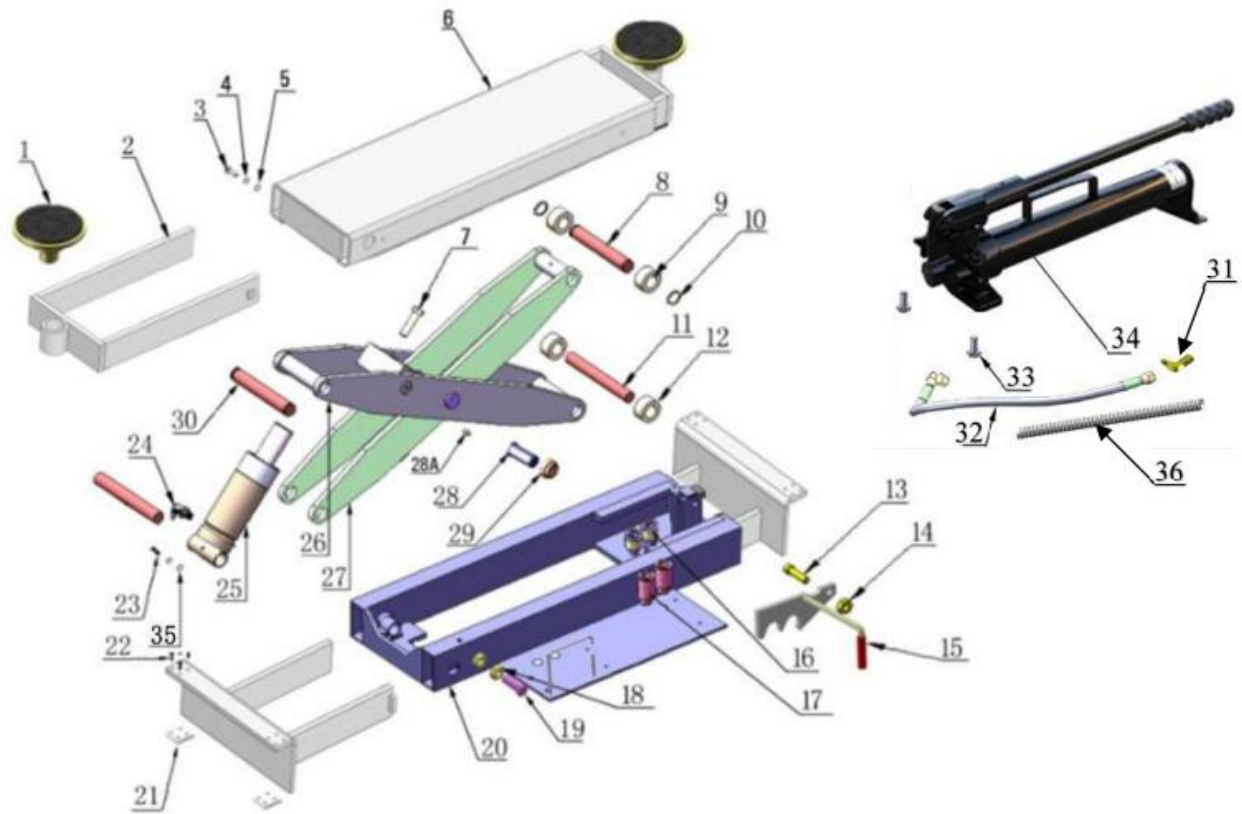
C. Waste hydraulic oil used by the equipment can not be thrown into regular

trash or dumped into the environment. It pollutes the environment and is illegal. Instead, take it to a recycling center. Used/dirty hydraulic oil can be cleaned and re-used.

## V. TROUBLE SHOOTING

<b>TROUBLE</b>	<b>CAUSE</b>	<b>REMEDY</b>
Jack raises slowly or descent slowly	1. Relief rod is not twisted or damaged 2. Low oil level 3. Oil line leakage 4. Dirty hydraulic oil 5. Oil line is jammed 6. Overload lifting	1. Reset or replace 2. Fill in the tank 3. Check the oil connection and the fittings are tighten 4. Check the oil, replace and clean hydraulic system 5. Clean the oil line 6. Check load
Lift does not stay up	1. Oil line leakage 2. Dirty hydraulic oil 3. Cylinder leaks 4. Spring of pedal for reset release is stuck	1. Check the oil connection and tighten the fittings 2. Check the oil, replace and clean hydraulic system 3. Replace oil cylinder seal 4. Repair or replace
Lift cannot lower	1. Safety device are engaged 2. The "RELEASE" button of the pedal is not pressed	1. Re-operate 2. Re-operate

## VI. EXPLODED VIEW

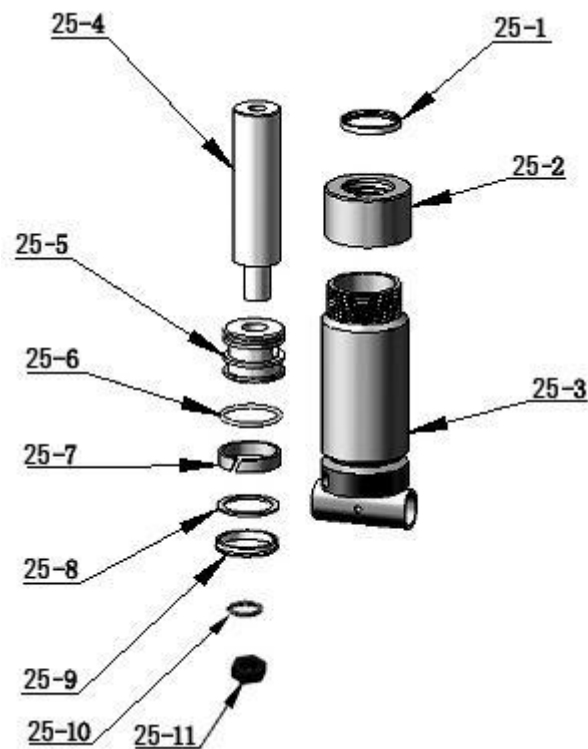


**Fig.12**

## PARTS LIST

Item	Part No.	Description	QTY
1	10680030C	Rubber Pad Assembly	2
2	11600039	Extendable arm frame Assembly	2
3	10201002	Hex Bolt M8*16	2
4	10209034	Lock Washer Φ8	2
5	10209033	Washer Φ8	2
6	11600038	Upper support Assembly	1
7	10680055	Hex Bolt M12*70	1
8	11600036	Pin for upper roller	1
9	11600035	Upper roller	2
10	10206032	Clip Ring Φ25	2
11	11680011	Pin for lower roller	2
12	11680009	Roller	2
13	10680013	Socket Bolt M12*50	1
14	10206023	Self Locking Nut M12	5
15	11600040	Safety Lock device	1
16	11209051B	Stackable extension adapter 1.5"	2
17	11209052B	Stackable extension adapter 2.5"	2
18	10209021	Hex Nut M10	2
19	10690018	Hex Bolt M10*40	2
20	11680023A-01	Base frame weldment	1
21	10680059	Plastic slider	4
22	10680031	Typing screw M5*16	16
23	10420005	Hex set Bolt M5*8	1
24	10420097	90° fitting for cylinder	1
25	10680030	Cylinder	1
26	11600033	Outer Scissors	1
27	11600034	Inner Scissors	1
28	11680032	Scissor Pin for main Connecting	2
29	10620022	Self Locking Nut M24	2
30	11600037	Connecting Pin	1
31	10420097	90° fitting	1
32	10680088	Oil Hose 1/4*330	1
33	10209043	Hex Bolt	4
34	10690002	Manual pump	1
35	10620064	Washer Φ6	2
36	1005034001-01	Wave tube φ25.5*φ20*360	1

## CYLINDER (10600030)



**Fig.20**

## PARTS FOR HYDRAULIC CYLINDER

Item	Part No.	Description	QTY	Item	Part No.	Description	QTY
27-1	10209078	Dust Ring $\Phi 38*\Phi 46*5$	1	27-7	10201029	Support Ring	1
27-2	11670006	Head Cap	1	27-8	10201030	Y Ring	1
27-3	11670011	Bore Weldment	1	27-9	10201030A	Support Ring $\Phi 53*\Phi 63*3$	1
27-4	11670008	Piston Rod	1	27-10	10206069	O Ring $\Phi 21*3.1$	1
27-5	11670009	Piston	1	27-11	10206071	Hex Bolt M20*2	1
27-6	10201031	O Ring	1				

## **VII. Car lift safety tips**

Put this safety tips in a place where you can always alert the operator. Please reference to the lift manufacturer's manual for specific information about the lift.

1. Check the lift daily. If the machine breaks down or has damaged parts, do not operate, and use the parts of original equipment to repair.
2. Do not overload the lift. The rated weight of the manufacturer design is indicated on the label of the lift.
3. Position control of the vehicle and operation of the lift can only be done by a trained and authorized person.
4. You can not lift a car with people inside. When the lift is working, the customer or other people should not be around the machine.
5. Keep the place around the lift without obstacles, lubricants, grease, garbage and other debris for a long time.
6. Carefully drive the car onto the lift, and the lift should raise to the required height for operation. **Note**, if you are working under a car, raise the lift high enough and make sure the safety mechanism has locked the machine.
7. Note, removing(or installing) parts from a car can cause a sudden shift of gravity that unstable the raised car. Reference to the car manufacturer's service manual as a recommended procedure when removing parts from the car.
8. Before the lift drops, make sure that the tool tray, tool rack, etc. are removed under the car.

## **VIII. Lift disposal.**

When the car lift cannot meet the requirements for normal use and needs to be disposed, it should follow local laws and regulations.

